

# Brain RNA Extraction in Microcentrifuge Tubes

RS18-0235C.BR

## Materials

- [Red or PC1 Bead Lysis Kit](#)
- [MAGneat Tissue RNA Extraction Kit](#)

## Sample

- Brain



Scan for downloadable PDF

## Supplied in the Kit:

MAGneat Tissue RNA Lysis Kit Contents	
Lysis Buffer	27.5 mL
Binding Buffer	10.5 mL
MAGneat Magnetic Beads	1.65 mL
Wash Buffer 1	15 mL
Proteinase K	22 mg
DNase I	2.75 mg
DNase I Reaction Buffer	220 µL
RNA Elution Buffer	11 mL

## To Be Supplied by User:

- Phosphate-Buffered Saline
- 100% Ethanol
- 100% Isopropyl Alcohol
- Molecular Grade Water
- Magnetic Tube Rack, e.g. Magnetic Stand Assembly ([MAGRACK8](#)) shown in Appendix A.

## Methods

### Buffer Preparation

- ✓ Lysis Buffer: Ready to use.
- \_\_\_ Binding Buffer: Add 24.5 mL isopropyl alcohol to the RNA Binding Buffer bottle.
- \_\_\_ Wash Buffer 1: Add 22.5 mL of 100% ethanol to the Wash Buffer 1 bottle.
- \_\_\_ Wash Buffer 2 (75% ethanol): 3 parts of 100% ethanol to 1-part of molecular grade water, prepare fresh each day, producing 2.3 mL per sample with 10% excess.
- ✓ DNase Reaction Buffer: Ready to use.
- ✓ RNA Elution Buffer: Ready to use.

### Enzyme Reconstitution

#### Proteinase K:

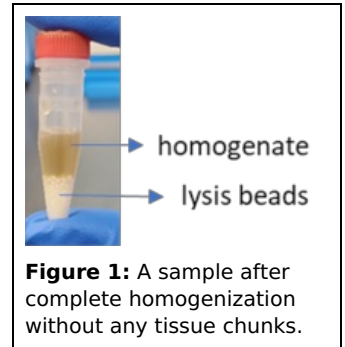
- \_\_\_ Bring proteinase K vial to room temperature.
- \_\_\_ Remove stopper and add 1.1 mL of molecular grade water to the proteinase K vial.
- \_\_\_ Replace stopper and incubate at room temperature for 15 minutes, mixing well by inversion.
- \_\_\_ Aliquot into required volumes and store at -20°C. Avoid multiple freeze thaw cycles

# Brain RNA Extraction in Microcentrifuge Tubes

**Note:** Ensure that all solutions are at room temperature prior to use.

## Homogenization

1. Add 500  $\mu\text{L}$  of Lysis Buffer and 20  $\mu\text{L}$  proteinase K into each lysis kit tube.
2. Weigh up to 50 mg of tissue samples and transfer to the buffer-filled tubes. **Note:** Cut into small pieces - larger tissue size may affect complete homogenization with the recommended homogenization setting.
3. Set the [Bullet Blender](#) at speed 6, time 3 minutes and homogenize the samples. If using other homogenizer models, refer to the manufacturer's instructions for settings.
4. Remove the tubes and visually inspect the samples to confirm complete homogenization (Figure 1). **Note:** If unhomogenized tissue is seen, homogenize for additional 30 seconds.

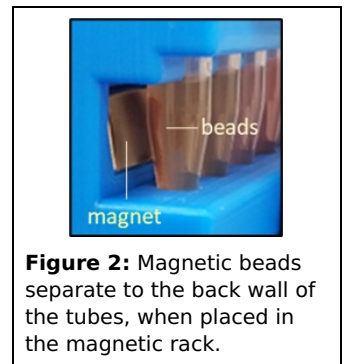


**Figure 1:** A sample after complete homogenization without any tissue chunks.

## Extraction

### Nucleic Acid Binding:

1. Prepare fresh microtubes in the tube rack with 200  $\mu\text{L}$  of PBS.
2. Transfer 320  $\mu\text{L}$  of the homogenate to the new tubes containing PBS.
3. Centrifuge tubes at 13,000 x g for 5 minutes.
4. Transfer 450  $\mu\text{L}$  of supernatant into new microfuge tubes, being careful not to disturb the pellets or transfer any debris.
5. Add 450  $\mu\text{L}$  (or volume equal to the transferred supernatant from step 4) of Binding Buffer to the supernatant in each tube. Slide the tube rack onto the mixing base and invert to mix the buffer with the homogenate.
6. Vortex the MAGneat beads thoroughly making sure that there are no clumps in the tube.
7. Slide the tube rack off the mixing base and add 30  $\mu\text{L}$  of the beads to each sample tube. Mix tubes by inversion to resuspend the magnetic beads. Allow to stand for 5 minutes, mixing again halfway through.
8. Slide the tube rack onto the magnetic stand and allow to sit for 1-2 minutes, until the magnetic beads separate from the homogenate (Figure 2).
9. Using a pipette, discard the supernatant without disturbing the beads (Figure 3). Remove the tube rack from the magnetic stand.



**Figure 2:** Magnetic beads separate to the back wall of the tubes, when placed in the magnetic rack.

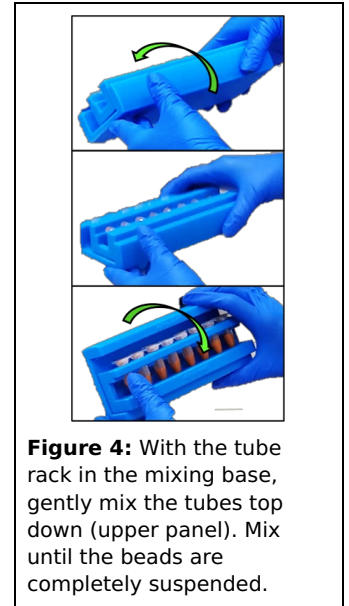


**Figure 3:** Using pipette tips, carefully remove the supernatant. If needed, hold the tube to prevent the tube from moving/spinning.

# Brain RNA Extraction in Microcentrifuge Tubes

## Washing I:

1. Add 700  $\mu\text{L}$  of Wash Buffer 1 to the tubes and then place the tube rack in the mixing base. Mix thoroughly by inversion, ensuring all beads have been detached from the tube walls and evenly suspended (Figure 4).
2. Remove the tube rack from the mixing base and place it on the magnetic stand. Allow the magnetic beads to separate.
3. Using a pipette, discard the supernatant. **Note:** *Be careful not to disturb the magnetic beads.*
4. Remove the tube rack from the magnetic stand. Add 700  $\mu\text{L}$  of Wash Buffer 2, mix thoroughly by inversion to completely resuspend the beads.
5. Transfer the tube rack to the magnetic stand and allow the magnetic beads to separate.
6. Discard the supernatant. **Note:** *Be careful not to disturb the magnetic beads.*
7. Repeat steps 4-6 for a total of 2 washes with Wash Buffer 2.
8. Centrifuge samples at 2,000  $\times g$  for 3 minutes to collect the remaining Wash Buffer. Place the tubes on the tube rack.
9. Use a 20  $\mu\text{L}$  pipette to remove the remaining Wash Buffer from the tubes (Figure 5).
10. Leave tube caps open to air dry the magnetic beads at room temperature for 5 minutes. **Note:** *Do not dry longer than 10 minutes as this can cause RNA degradation.*



**Figure 4:** With the tube rack in the mixing base, gently mix the tubes top down (upper panel). Mix until the beads are completely suspended.



**Figure 5:** Using the tip of a pipette, carefully remove all of the remaining Wash Buffer that has collected just below the magnetic bead pellet.

## Elution and DNase I Treatment:

1. Add 100  $\mu\text{L}$  of RNA Elution Buffer to each tube. Mix by tapping to ensure that the magnetic beads are completely resuspended.
2. Prepare the DNase I mastermix. Each sample requires 100  $\mu\text{L}$  of DNase I reaction buffer and 4  $\mu\text{L}$  of DNase I. Mix by pipetting up and down. Do NOT vortex.
3. Add 104  $\mu\text{L}$  of DNase I mastermix to each sample and mix by pipetting up and down to fully resuspend the magnetic beads. **Note:** *Do NOT vortex samples containing DNase I.*
4. Incubate samples at room temperature for 10 minutes.

## Washing II:

1. Add 200  $\mu\text{L}$  of RNA Binding Buffer to each tube. Mix well by inversion, ensuring all beads are resuspended.
2. Add 400  $\mu\text{L}$  of Wash Buffer 2, mix well by inversion.
3. Place the tube rack onto the magnetic stand and allow the magnetic beads to separate.

## Brain RNA Extraction in Microcentrifuge Tubes

---

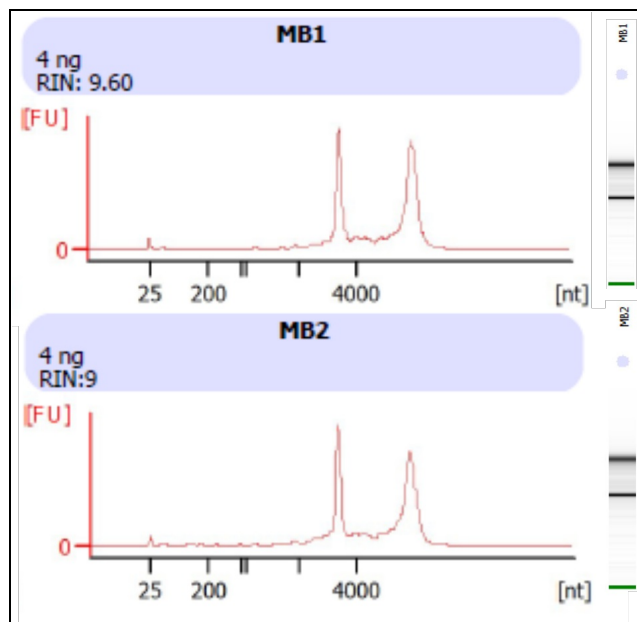
4. Discard the supernatant then remove the tube rack from the magnetic stand. **Note:** *Be careful not to disturb the magnetic beads.*
5. Add 400  $\mu$ L of Wash Buffer 2 and mix well by inversion. Ensure beads are detached from the tube walls.
6. Place the tube rack onto the magnetic stand and allow the magnetic beads to separate.
7. Discard the supernatant then remove the tube rack from the magnetic stand. **Note:** *Be careful not to disturb the magnetic beads.*
8. Centrifuge samples at 2,000 x g for 3 minutes to collect the remaining Wash Buffer. Place the tubes on the tube rack.
9. Use a 20  $\mu$ L pipette to remove the Wash Buffer from the tubes. Do not disturb the magnetic beads.
10. Leave caps open to air dry the magnetic beads at room temperature for 5 minutes. **Note:** *Do not dry longer than 10 minutes as this can cause RNA degradation.*

### Elution II:

1. Add 100  $\mu$ L of RNA Elution Buffer to each tube. Mix by tapping to ensure that the magnetic beads are completely resuspended.
2. Place the tube rack onto the magnetic stand and allow the magnetic beads to separate.
3. Transfer the clear supernatant containing the RNA into new, labeled microfuge tubes for downstream processing. Be careful not to transfer any magnetic beads.
4. Analyze RNA quality ( $OD_{260}/OD_{280}$ ) and yield using a NanoDrop™ or other spectrophotometer and gel (Bioanalyzer data is shown in Figure 6 and NanoDrop™ readings in Table 1).
5. Isolated RNA can be stored at  $-80^{\circ}\text{C}$ .

# Brain RNA Extraction in Microcentrifuge Tubes

**Figure 6. Bioanalyzer Data.**



**Table 1. NanoDrop™ Readings.**

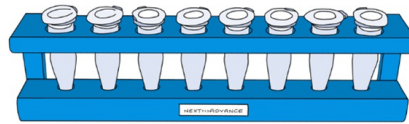
Tissue	Yield: µg/mg Tissue	OD <sub>260/280</sub>
Brain 1	0.4720	2.0700
Brain 2	0.5870	2.0600

# Magnetic Stand Assembly

## Using the [Magnetic Stand Assembly](#)

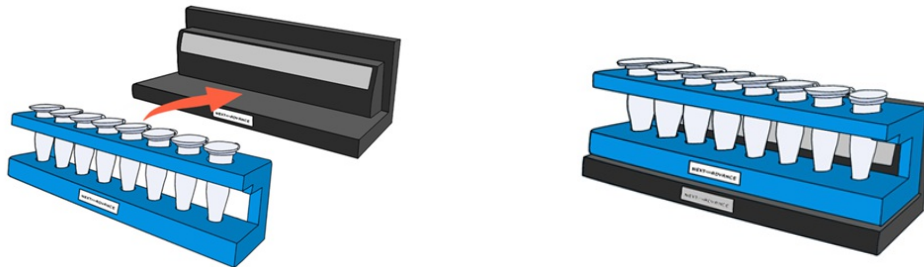
### Tube Rack:

Basic rack that holds up to eight 1.5 mL or 2 mL tubes during every step of procedure. No assembly required.



### Magnetic Stand:

Contains a magnet. Place the tube rack onto the magnetic stand for the bead separation steps.



### Mixing Base:

Has an overhang to retain tubes in the tube rack during rocking or inversion mixing. Place the tube rack into the mixing base during incubation, binding, and washing steps.

